

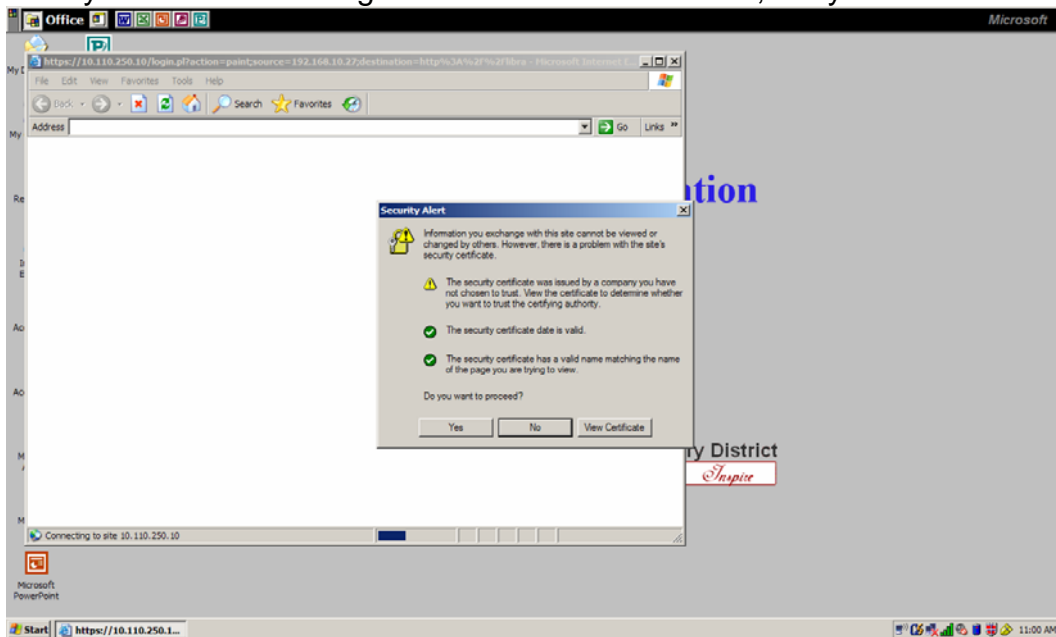
Connecting to the PPLD Wireless Network: Windows

Open your wireless network connections. If you do not automatically connect to the PPLD-W network, right-click the *wireless network* icon and click *view available wireless networks*.

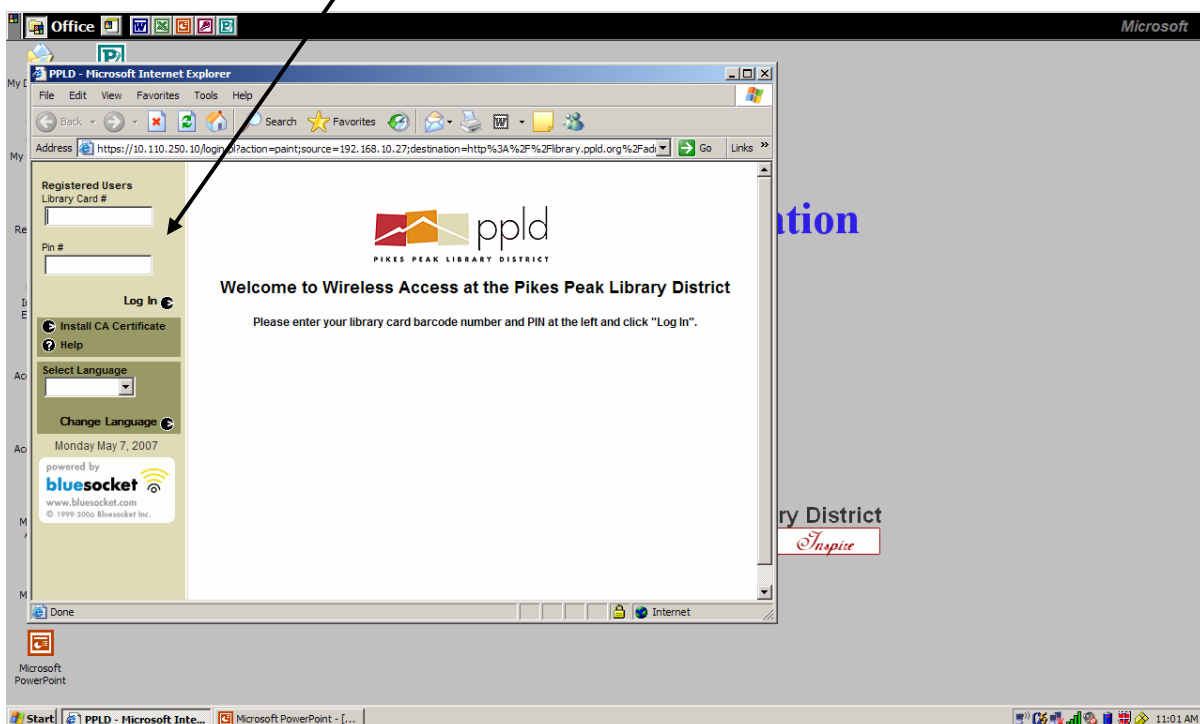
If you do not see PPLD-W listed, refresh the list of available networks.

Once you connect to the PPLD-W network, open your Internet browser (such as Internet Explorer).

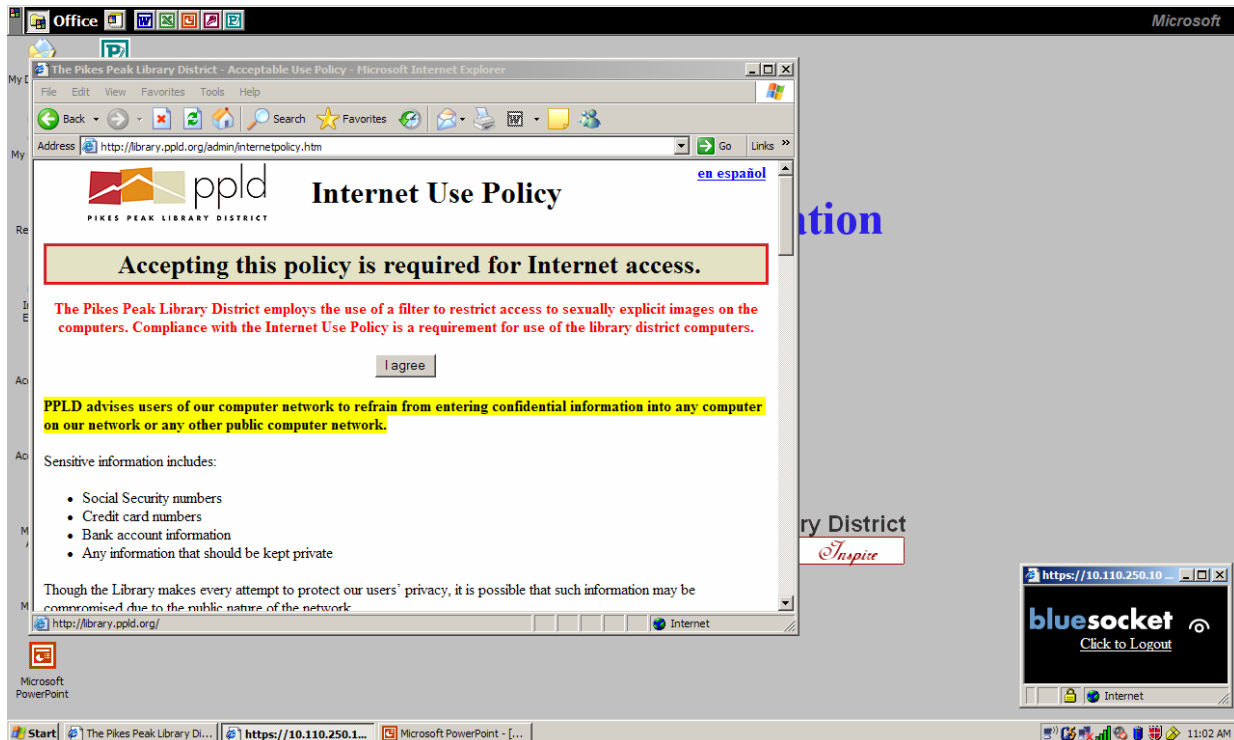
Click “yes” when the Security Alert box asks if you want to proceed. With Internet Explorer 7, you may also see a message that the site is not secure, but you can continue to the site.



When the “Welcome to Wireless Access” site comes up, log on with your PPLD library card number and PIN.



You should now be able to use the Internet.



Troubleshooting:

**Please note that the Library cannot assist you with your laptop or configuration.
The Library cannot accept the liability of handling your equipment.**

1. If you cannot connect to the network, you may need to release the IP address on your laptop to obtain an IP address associated with the PPLD-W network. Please ask staff for the instructions depending on your operating system.
(<http://www.ppld.org/AboutYourLibrary/Wireless/default.asp>)
2. If you can connect to the PPLD-W network, but cannot bring up the logon site, your Internet security and/or firewall settings may be blocking access to it.
3. At times, it may take longer to log on depending on the number of users on the network.
4. PPLD eBranch items cannot be downloaded on to the laptop while using the PPLD wireless network.