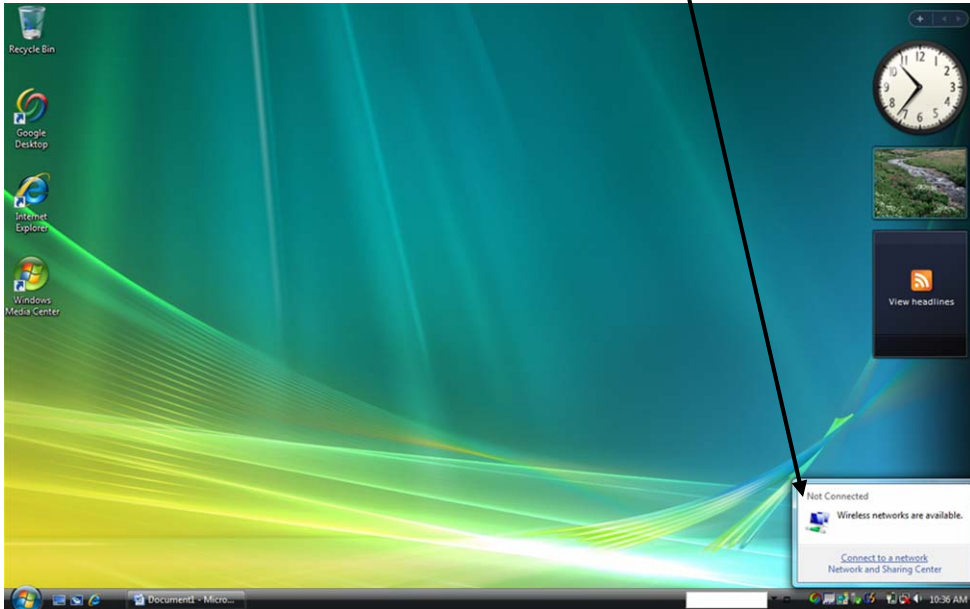
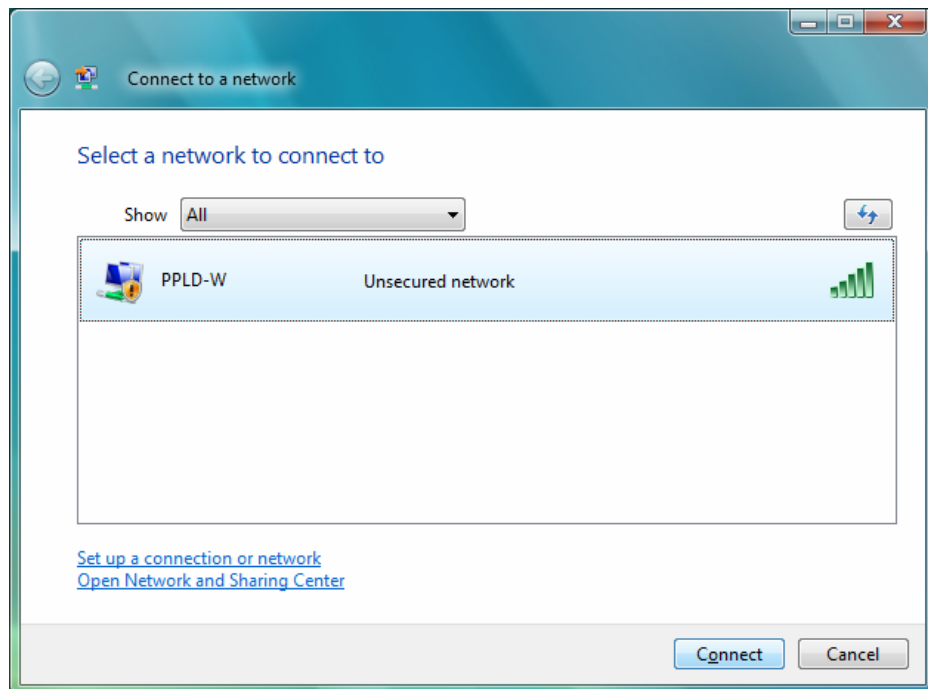


Connecting to the PPLD Wireless Network: Windows Vista

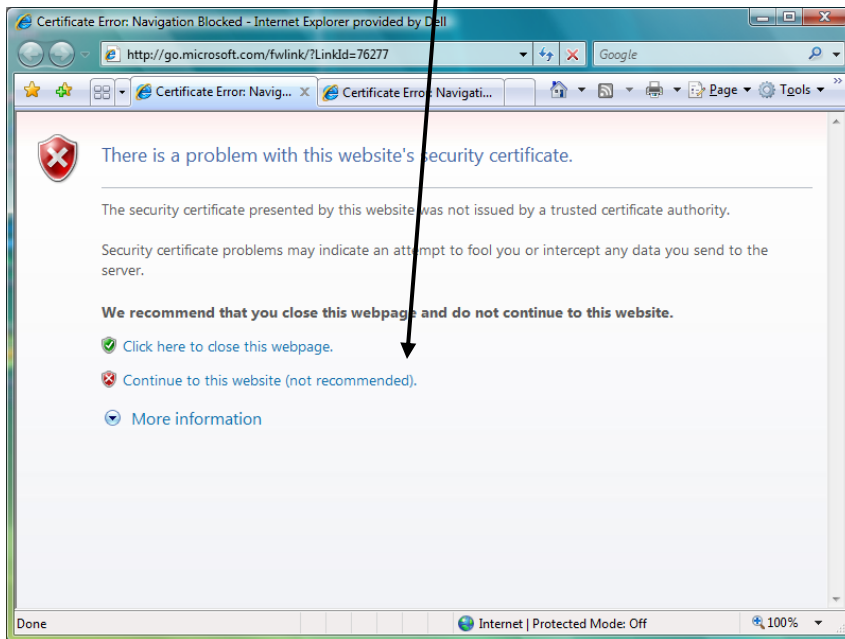
If you do not automatically connect to the PPLD-W network, right-click the wireless network icon and click *Connect to a network*.



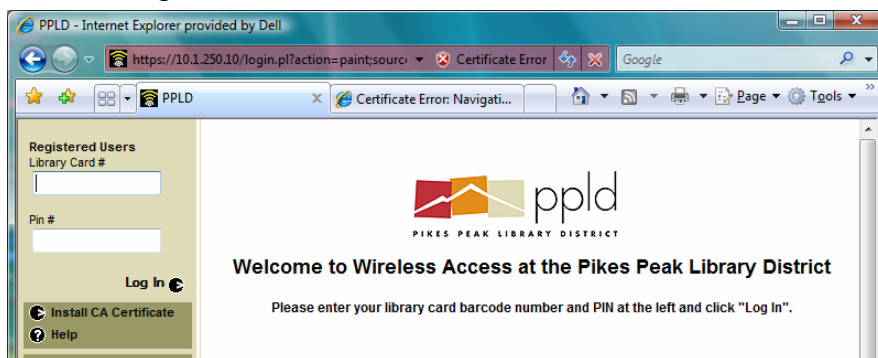
Choose to show **All** networks and click on the refresh icon if you do not see *PPLD-W* in the list of available wireless networks. When you do see *PPLD-W*, highlight it and click on the **connect** button.



When you have successfully connected to the PPLD-W wireless network, open Internet Explorer. You may see a “certificate error” message. Click on the link that says “Continue to this website.”



The PPLD Wireless Access logon page will display. Enter your library card number and PIN to gain full Internet access.



**Please note that the Library cannot assist you with your laptop or configuration.
The Library cannot accept the liability of handling your equipment.**

1. If you cannot connect to the network, you may need to release the IP address on your laptop to obtain an IP address associated with the PPLD-W network. Please ask staff for the instructions depending on your operating system.
(<http://www.ppld.org/AboutYourLibrary/Wireless/default.asp>)
2. If you can connect to the PPLD-W network, but cannot bring up the logon site, your Internet security and/or firewall settings may be blocking access to it.
3. At times, it may take longer to log on depending on the number of users on the network.
4. PPLD eBranch items cannot be downloaded on to the laptop while using the PPLD wireless network.